



Miller Diversified Realty Corporation

3410 Briarfield Blvd., Suite A Maumee, Ohio 43537 P. 419.867.9119 F. 419.867.7924

NEW OFFICE CONDOMINIUM: FOR SALE

IN THE CROSSROADS OF OHIO, MERIDIAN CT., ROSSFORD, OHIO 43460

General Information

Location : Meridian Court, Rossford
Closest Intersection : Rt. 20/ St. Rt. 795
City : Rossford
County : Wood
State : Ohio
Zoned : Planned Commercial

Price Details

Shell Price : 1400 s.f. plans starting at **\$169,900.**
Call for options and detailed pricing.
Terms : Cash/ Conventional
Condominium Association Fees: Prorated*

Utilities

Natural Gas : Individually metered
Electric : Individually metered
Water : Prorated

*Real estate taxes, insurance, maintenance are prorated per condominium association declarations

Building Information

Total Square Footage : 36,000 +/-
Available : 1400 - 4400 sq.ft
Site Dimensions : 2.97 Ac.
Construction : Wood frame with brick veneer
Parking : 92
Number of Floors : 1 & 1.5
Floor Plans Available : Yes
Basement: Full, Partial or Crawl plans available

Comments

- Own your own! Build equity as your business grows.
- Excellent access. Minutes to interchanges at I-75.
- Shopping and dining in the immediate area.
- Ideal for professional office space, showroom or destination retail.
- Floor plans built to your specifications

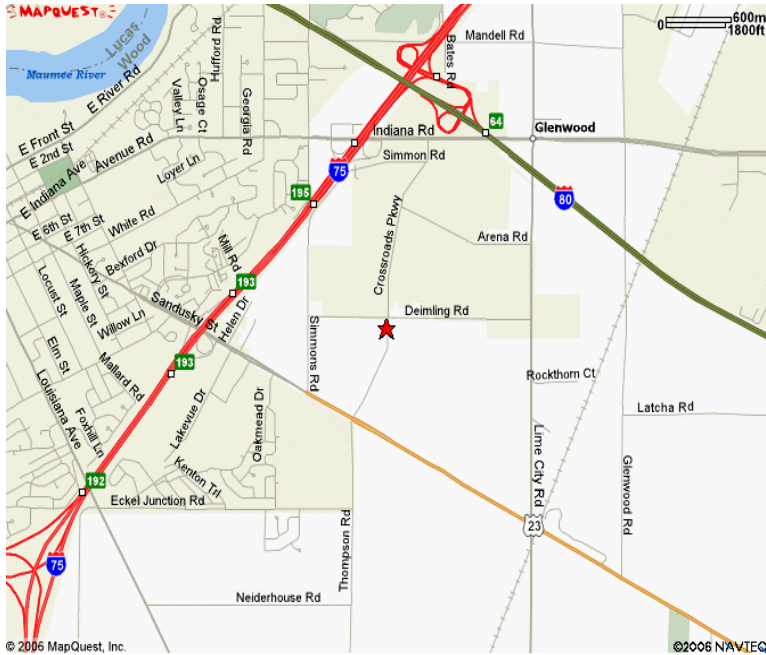


For More Information, Contact:
Jerry Miller, CCIM or Ron Loeffler
P. 419.867.9119 F. 419.867.7924



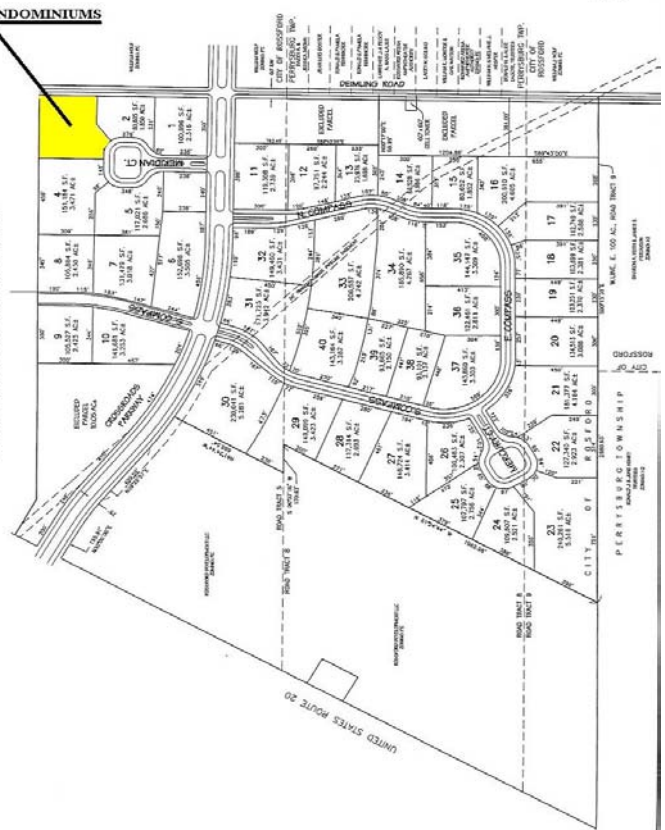
Miller Diversified Realty Corporation

3410 Briarfield Blvd., Suite A Maumee, Ohio 43537 P. 419.867.9119 F. 419.867.7924



OFFICE CONDOMINIUMS

PRELIMINARY DRAWING OF *Meridian Center* CITY OF ROSSFORD, WOOD COUNTY, OHIO



All information as submitted may be subject to errors and omissions. No warranty or representation is made as to accuracy thereof.
Last Updated: 5/18/07